

INTRODUCING YOUR PRALUENT PEN

Visual & audible injection feedback

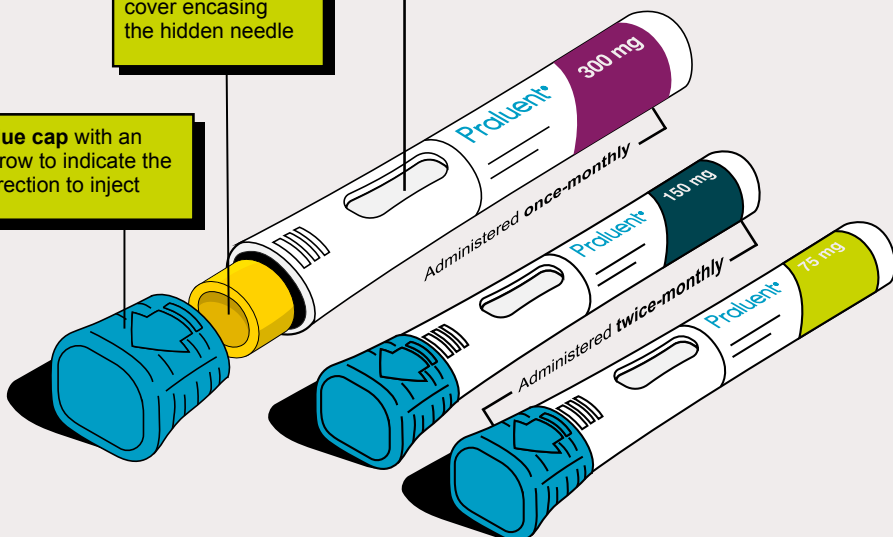
Viewing window
turns yellow to provide
visual confirmation
that the injection
is complete

Audible clicks
tell you when
the injection has
started and when
it's complete

No button needed
to activate the
injection, just press
and hold the pen
against the skin

Yellow needle
cover encasing
the hidden needle

Blue cap with an
arrow to indicate the
direction to inject



GETTING STARTED WITH PRALUENT

You've been prescribed PRALUENT to help lower the amount of LDL cholesterol, also called LDL-C, in your blood.¹ In this booklet, you'll find useful information on your new medication, including a step-by-step guide on how to inject yourself, or someone else, with PRALUENT. Please read the Package Leaflet and Instructions for Use that are included with your medication before injecting PRALUENT.

If you have any questions or concerns about your medication, or how to use your PRALUENT pen, speak to your healthcare professional.

PREPARATION INSTRUCTIONS¹

Warm the pen:

First, you'll need to take the pen out of the fridge and **let it warm at room temperature for 45 minutes.**

While you wait, check the following things on your PRALUENT pen:

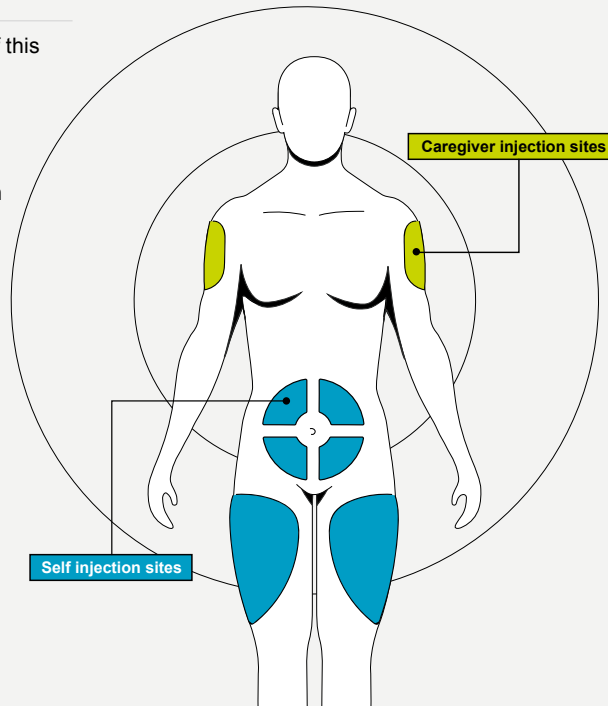
- The dose matches your prescription
- The pen is not damaged
- The blue cap is secure
- The liquid in the viewing window is clear and is either colourless or pale yellow
- Check the expiration date: do not use if this date has passed

Do not use the PRALUENT pen if it has been dropped on a hard surface.

If you experience any PRALUENT pen issues, report this to your healthcare professional. Do not attempt to use a PRALUENT pen that you suspect is malfunctioning.

Choose a suitable injection site:

If you are injecting yourself with PRALUENT, you can inject into the top of your thighs or your belly (except for the 5 cm area around your belly button). If you are injecting someone else with PRALUENT, you can use the outer side of the upper arm. You must use a different spot each time you inject. Only inject onto exposed skin, never do it through clothing.



Do not use on skin that is tender, hard, red or hot. Do not use any area near a visible vein.

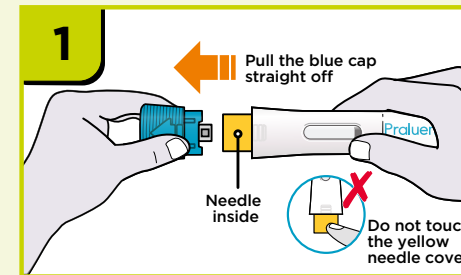
Gather the additional items you'll need for the injection:

- Alcohol wipes, to clean the area of skin you plan to inject
- Cotton ball or gauze, to stop any bleeding after the injection
- Puncture-resistant container, to dispose of the used PRALUENT pen

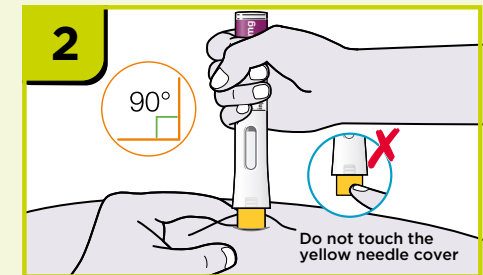
INJECTION INSTRUCTIONS¹

The PRALUENT pen is available in three doses (75 mg, 150 mg, and 300 mg). This means you can follow the same injection steps even if your dose changes. Your healthcare professional will instruct you on how frequently to inject PRALUENT.

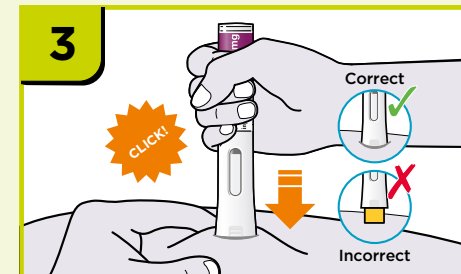
Before injecting, always wash your hands with soap and water, and dry with a towel, then use your alcohol wipe to clean the chosen injection site. You can stand or sit to give yourself an injection.



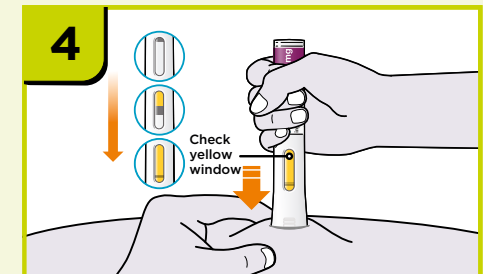
Remove the blue cap but don't touch the yellow needle cover. Do not use if blue cap is missing or not securely attached. Do not pull off the cap until you are ready to inject. Do not put the blue cap back on.



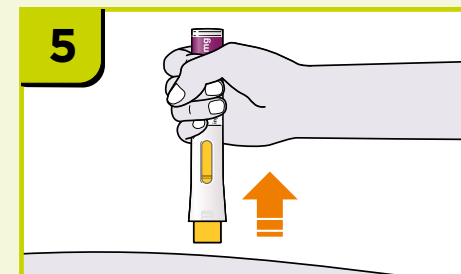
Place the needle cover onto the skin at a 90° angle. **Pinching** the skin can make it firmer and is required for children less than 12 years of age.



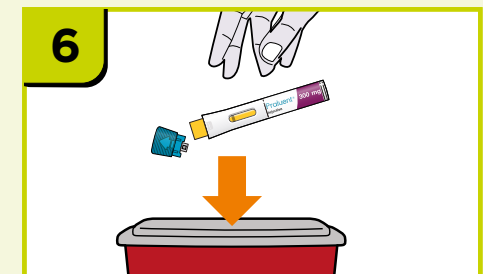
Press down and hold the pen against the skin to deliver the injection. **Listen out** for a click to indicate the injection has started.



Keep holding the pen against your skin, it will start to turn yellow. **Listen out** for a second click which indicates the injection has been administered.



Wait until the entire window has turned fully yellow, this indicates your injection is complete. Then **remove** the PRALUENT pen from the skin. Apply a cotton ball or gauze if needed. Do not rub the skin after the injection. If the window has not turned completely yellow, remove the pen and call Sanofi for help. Do not give yourself a second injection without speaking to your doctor, pharmacist or nurse.



Dispose of the PRALUENT pen and blue cap in a puncture-resistant sharps container (often called a sharps bin). Do not put the blue cap back on. Always keep the container out of the sight and reach of children.

Ask your doctor, pharmacist or nurse how to throw away the container.

WHAT IS PRALUENT USED FOR?¹

PRALUENT is a treatment for people with too much “bad” cholesterol, also known as LDL-C, in their blood. This includes adults with hypercholesterolemia (heterozygous familial and non-familial) or mixed dyslipidaemia, children and adolescents aged 8 years and older with heterozygous familial hypercholesterolemia, and adults with high cholesterol levels and cardiovascular disease.

HOW DOES PRALUENT WORK?¹

Your liver has specific receptors that remove “bad” cholesterol from the blood. However, a protein called PCSK9 (also found in the liver) can reduce the number of these receptors, causing levels of “bad” cholesterol to be higher than they should. PRALUENT contains the drug alirocumab, which blocks PCSK9. By blocking PCSK9, PRALUENT increases the number of receptors available to help remove the “bad” cholesterol, which lowers the amount of it in your blood.

HOW TO STORE PRALUENT¹

DO:



STORE IN THE ORIGINAL CARTON TO PROTECT FROM LIGHT



KEEP OUT OF THE SIGHT AND REACH OF CHILDREN



STORE IN THE FRIDGE BETWEEN 2°C AND 8°C

If needed, individual PRALUENT pens can be kept outside of the fridge, below 25°C, for a maximum of 30 days.

DO NOT:



DO NOT FREEZE OR HEAT THE PRALUENT PEN

DO NOT TOUCH THE YELLOW NEEDLE COVER

DO NOT USE THE PEN IF IT HAS BEEN DROPPED OR DAMAGED



DO NOT SHAKE THE PRALUENT PEN

DO NOT USE THIS MEDICINE IF IT LOOKS DISCOLOURED OR CLOUDY, OR IF IT CONTAINS VISIBLE FLAKES OR PARTICLES

DO NOT USE THE PEN IF THE BLUE CAP IS MISSING OR NOT SECURELY ATTACHED

DO NOT RE-USE A PEN



DO NOT USE THE PRALUENT PEN IF IT'S BEEN OUT OF THE FRIDGE FOR MORE THAN 30 DAYS

POSSIBLE SIDE EFFECTS¹

Although not everyone will get them, side effects are common with most medications. You should let your healthcare professional know if you experience any side effects while taking PRALUENT. Redness, itching, swelling, and pain/tenderness at the injection site are common side effects. Other side effects may affect up to 1 in 10 people, including upper respiratory tract signs or symptoms such as a sore throat, runny nose, sneezing, and itching. Please see the Package Leaflet for further information.

Do not use PRALUENT if you are allergic to alirocumab or any of the other ingredients listed in the Package Leaflet. If you think you are experiencing an allergic reaction, stop using PRALUENT and seek medical attention.

For further information on Praluent please contact the Sanofi Medical Information Department on 0800 035 2525, by email to uk-medicalinformation@sanofi.com or visit www.mypraluent.co.uk.

If you get any side effects, talk to your doctor, pharmacist or nurse.

This includes any possible side effects not listed in the Praluent package leaflet.

You can also tell us about side effects through the Yellow Card Scheme at yellowcard.mhra.gov.uk.

Side effects may also be reported to the Sanofi Drug Safety Department on 0800 090 2314 or by email to uk-drugsafety@sanofi.com.

By reporting side effects, you can help provide more information on the safety of this medicine.

LDL-C = low-density lipoprotein cholesterol; **PCSK9** = proprotein convertase subtilisin/kexin type 9.

Reference

1. Patient Information Leaflet (PIL) - Praluent Reflex PFP, Sanofi.

© Sanofi 2026. MAT-XU-2504998 (v1.0) March 2026